

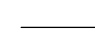

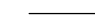


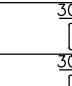
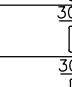
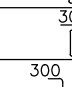
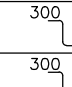
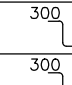
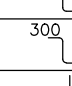


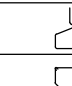
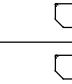




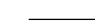
- REFERENCE DRAWINGS :

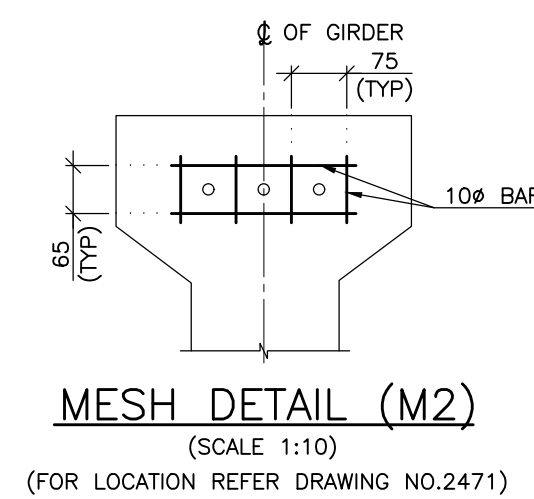
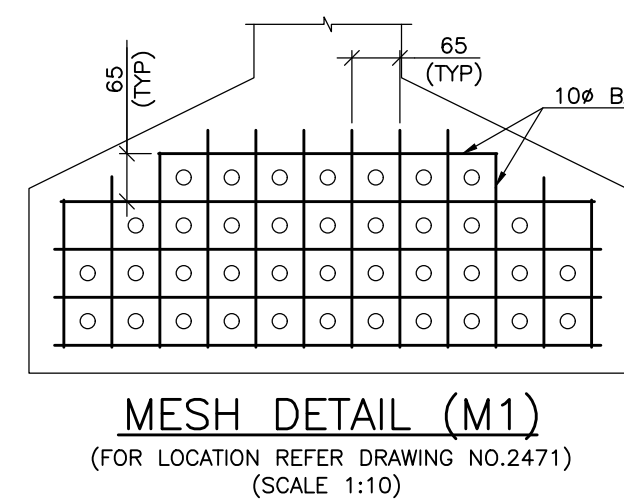
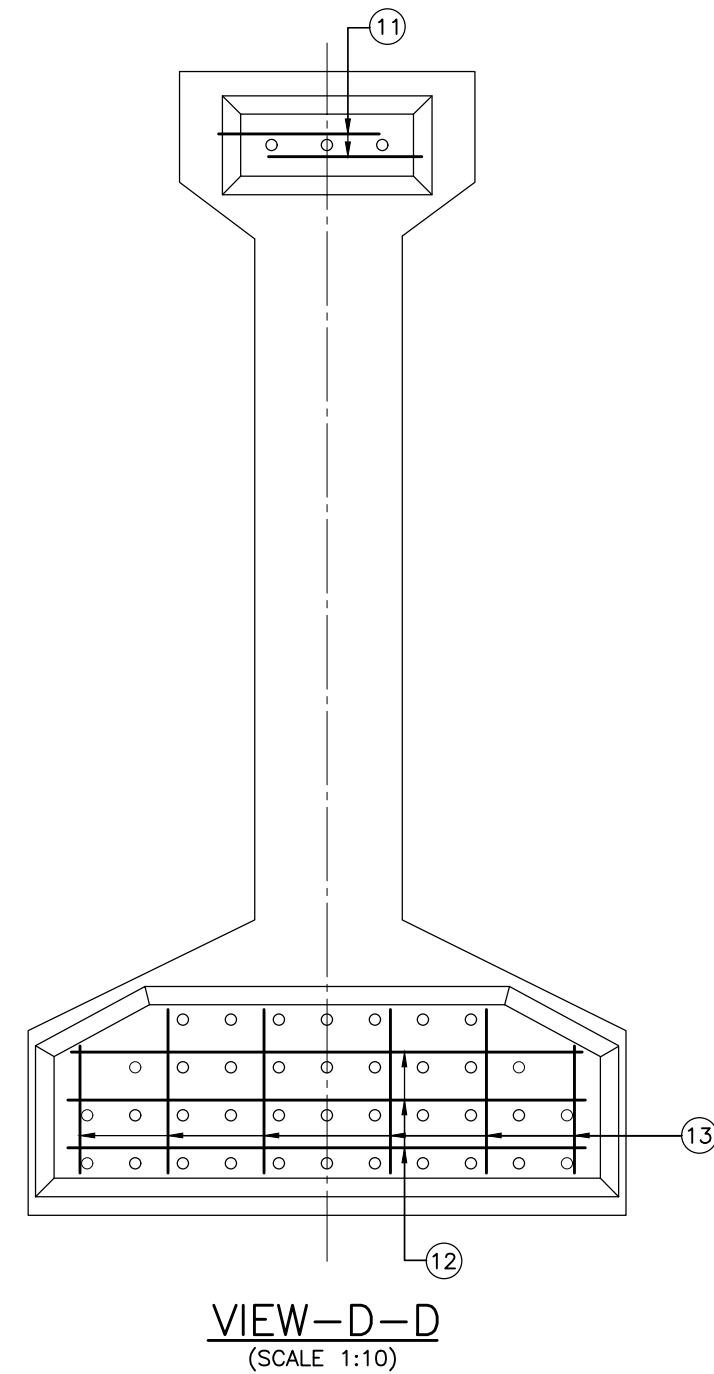
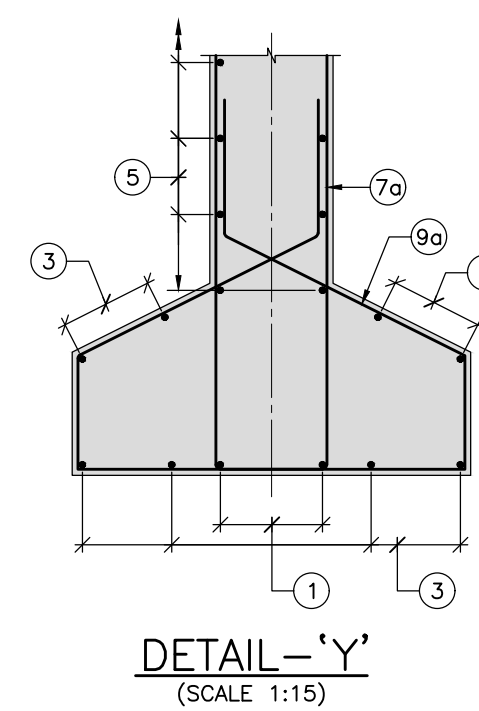
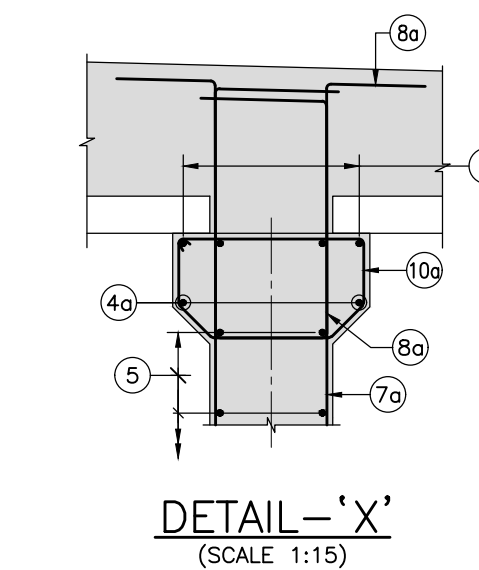
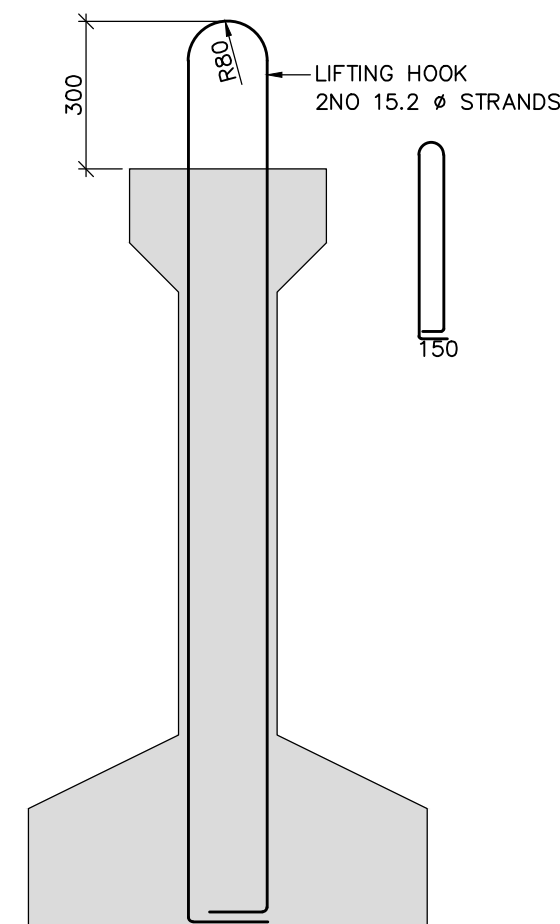
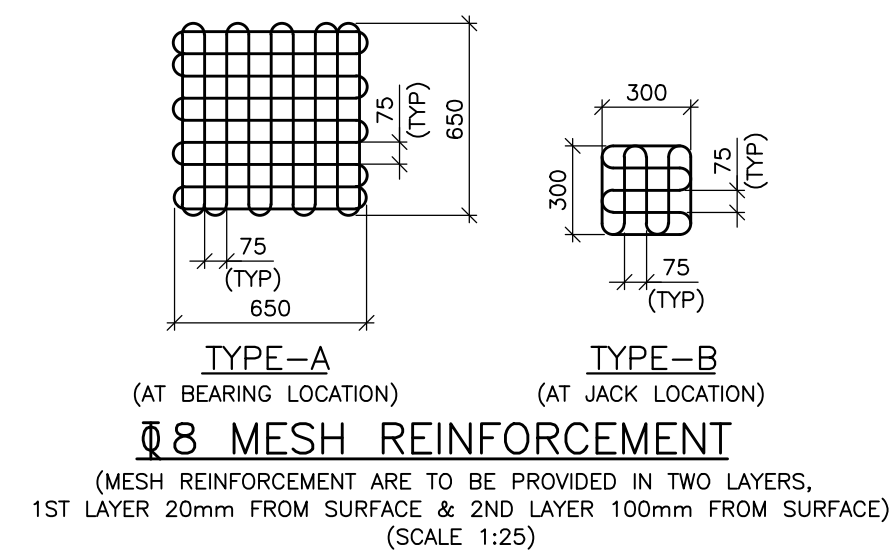
022077--BSRP--CR2-C-VD--GEN--30--2469....GENERAL ARRANGEMENT FOR 12.034M TRANSITION SPAN  
SUPERSTRUCTURE AT VIADUCT FOR CR2 FOR  
PP202A-UP203 -- SINGLE TRACK

022077--BSRP--CR2-C-VD--GEN--30--2471....PRE TENSIONED STRAND DETAILS FOR 12.034M TRANSITION  
SPAN SUPERSTRUCTURE AT VIADUCT FOR  
PP202A-UP203 -- SINGLE TRACK

022077--BSRP--CR2-C-VD--GEN--30--2472....REINFORCEMENT DETAILS OF 12.034M TRANSITION SPAN  
SUPERSTRUCTURE AT VIADUCT FOR CR2 FOR  
PP202A-UP203 -- SINGLE TRACK (DECK SLAB AND  
DIAPHRAGM)



ITEM	BAR MARK	BAR DIA.	SHAPE	TOTAL NOS./SPACINGS	REMARKS
I GIRDER	①	Ø12		2 Nos.	
	②				NOT USED
	③	Ø10		8 Nos.	
	④	Ø10		4 Nos.	
	④a	Ø10		2 Nos.	
	⑤	Ø10		2x5 Nos.	
	⑥				NOT USED
	⑦	Ø10		⊙ 250 c/c	
	⑦a	Ø12		⊙ 200 c/c	
	⑦b	Ø12		⊙ 150 C/C	
	⑧	Ø10		⊙ 250 c/c	
	⑧a	Ø10		⊙ 200 c/c	
	⑧b	Ø10		⊙ 150 C/C	
	⑨	Ø10		⊙ 250 c/c	
	⑨a	Ø10		⊙ 200 c/c	
	⑨b	Ø10		⊙ 150 C/C	
	⑩	Ø10		⊙ 250 c/c	
	⑩a	Ø10		⊙ 200 c/c	
	⑩b	Ø10		⊙ 150 C/C	
⑪	Ø10		2x2 Nos.		
⑫	Ø10		2x3 Nos.		
⑬	Ø10		2x6 Nos.		



## GOOD FOR CONSTRUCTION

NOTES :			LEGEND :			REFERENCE DRAWINGS :			REFERENCE DOCUMENTS :			KEY PLAN			STATION BOX KEY PLAN			
			<div><div><div>⊗</div><div>— BEARING</div></div><div><div>⊗</div><div>— JACKING POSITION</div></div><div><div>↑</div><div>— JACKING POSITION</div></div><div><div>G</div><div>— GIRDER</div></div><div><div>EF</div><div>— EACH FACE</div></div></div>						DOC—BSRP—CR2—EV—DGN—GEN—30—1371			<div><div><div>JALAHALLI STATION</div><div>HERBAL STATION</div><div>MATHIKERE STATION</div><div>YESHWANTPUR STATION</div></div><div><div>KANAKANAGAR N STATION</div><div>BENNINGAHALLI STATION</div></div></div>			<div><div></div><div>STATION BOX KEY PLAN</div></div>			
REV	DATE	BRIEF DESCRIPTION	CONTRACTOR :		QUALITY ASSURANCE				GENERAL CONSULTANTS		COUNTER SIGN		EMPLOYER :		PROJECT :			
			<div><div><div><div></div></div></div><div>TRANSPORTATION INFRASTRUCTURE IC EDRC-SPECIAL BRIDGES</div></div>		The responsibility of control, check and verification of accuracy, correctness, completeness, integration and full compliance of Contract provisions in respect of design analysis and drawing rests with Design & Build Contractor.				<div><div>CHECKED &amp; APPROVED</div><div>NAMESIGN</div><div>PROJECT DIRECTOR</div></div>		PROJECT SIGN		<div><div><div><div></div></div></div><div>RAIL INFRASTRUCTURE DEVELOPMENT COMPANY (KARNATAKA) LIMITED</div></div>		BENGALURU SUBURBAN RAILWAY PROJECT (BSRP) K-RIDE CORRIDOR - 2			
			DETAILED DESIGN CONSULTANT (DDC) :		PROOF CONSULTANT (PC) :		Contractor		CIVIL/GAD		SIGN		K RIDE		REINFORCEMENT DETAILS OF 12.034M TRANSITION SPAN SUPERSTRUCTURE AT VIADUCT FOR CR2 FOR PP202A-UP203 - SINGLE TRACK			
			<div><div><div><div></div></div></div><div>STUP Consultants Pvt. Ltd 2/F, 6th Cross, 100th Main Road, 4th &amp; 5th Stage, 1st Mile, Hebbal, Bengaluru-560032 Ph: 080-2696 1969 Email: bangalore@stupconsultants.com www.stupconsultants.com</div></div>		<div><div><div><div></div></div></div><div>Indian Institute of Technology Madras IIT P.O., Chennai 600 036 INDIA</div></div>		DATE		CIVIL/ALIGNMENT		NAME		CIVIL/GAD		DESIGNATION		DRAWING TITLE :	
			<div><div><div><div></div></div></div><div>L&amp;T CONSTRUCTION EDRC-SPECIAL BRIDGES - TDC</div></div>		<div><div><div><div></div></div></div></div>		23.12.2024		CIVIL/STRUCTURAL		DATE		CIVIL/ALIGNMENT		DRAWING NO. :			
							23.12.2024		CIVIL/GEOTECH		CIVIL/STRUCTURAL		O22077-BSRP-CR2-C-VD-GEN-30-2470					
							23.12.2024		PREPARED BY		GAC/CIVIL/DESIGN		REVISION					
							23.12.2024		CHECKED BY				0					
							23.12.2024		APPROVED BY				DWG STATUS					
							23.12.2024		ISSUED BY				C					
0	23.12.24	REVISED AS PER GC'S LETTER NO. 3477											SCALE : AS SHOWN		DATE : 23.09.2024			
a	23.09.24	FOR APPROVAL											PRELIMINARY DWG (P), DEFINITIVE DWG (D), CONSTRUCTION DWG (C), AS BUILT DWG (B), SHOP DWG (S), MANUFACTURED DWG (M)		SHEET SIZE : A1			